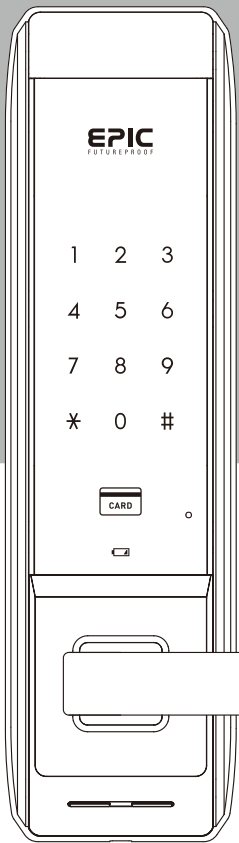


# USER MANUAL

[ DIGITAL DOOR LOCK ]

## ES-M50

PIN NUMBER  
RFID CARD



The default Pin Number is [1, 2, 3, 4].  
Please change to new Pin Number.  
Ensure not to use consecutive or  
repetitive numbers for your safety.



info@epic.co.kr www.epic.co.kr

This product should be installed by skilled installer only.  
To receive full coverage of the product warranty.  
Please do not install by yourself for safety purposes.

PTMP6140ONTA\_REV.01

### Safety Precautions

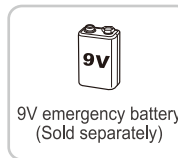
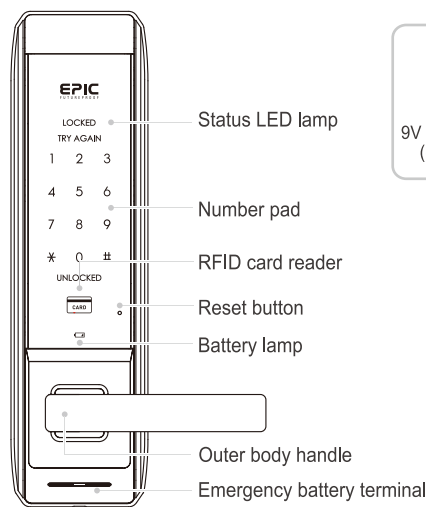
- Please do not repair the product by yourself.
- Please check environment before installation.
- Please read the manual carefully before using.
- Please change your pin number periodically.
- Please do not knock or apply force on the lock.
- Protect the product from wetness & moisture.
- Please replace with new batteries all-at-once.
- Clean the lock with clean dry cloth.
- Please use the product correspondingly.

### Product Dimension

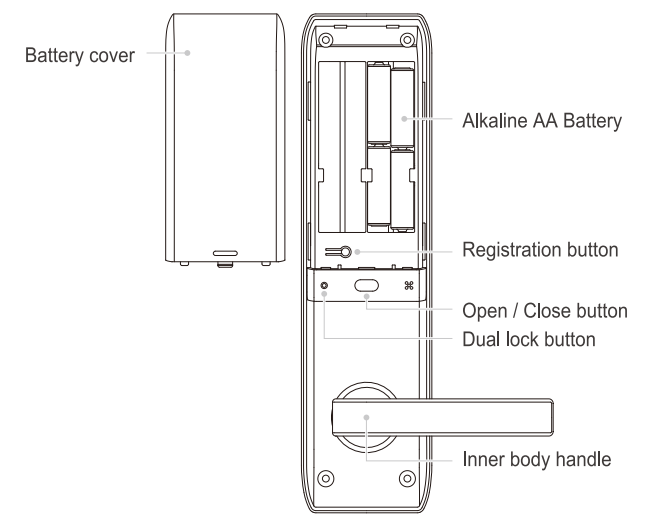
| Items                   | Descriptions       |                                                             |
|-------------------------|--------------------|-------------------------------------------------------------|
| Installation conditions | Door thickness     | 40~50mm                                                     |
| Authentication Method   | No. of pin number  | 4~12 digits                                                 |
| Power supply            | DC 6V              | LR 6 AA ALKALINE (X8)EA                                     |
| Emergency Battery       | DC 9V              | ALKALINE BATTERY (Sold separately)                          |
| Temperature             | Sensor temperature | 72°C±5°C Maximum Temperature<br>62°C±5°C Normal Temperature |
|                         | Outer body         | Al, Zn, ABS                                                 |
| Material                | Inner body         | Zn, ABS                                                     |

| Items         | Frequency   | Channel | Module | Public line power     |
|---------------|-------------|---------|--------|-----------------------|
| RFID          | 13.56 MHz   | 1 EA    | ASK    | 93.5 dBuV/m@10m Below |
| Remote device | 447.275 MHz | 1 EA    | FSK    | 10mW Below            |

### Product Description (Outer body)



### Product Description (Inner body)

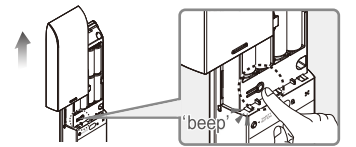


### Pin Number Registration

**Caution** Always register pin number while door is open, default pin number upon purchase is [1, 2, 3, 4].  
**Warning!** Please do not forget the pin number at all times. Once forgotten you will not be able to register new pin or card. There is no pin number reset.

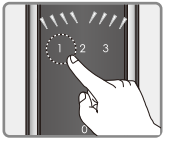
#### ※ To change existing pin number

- ① Open battery cover.  
Press [Registration] button once  
~beep sound will be heard.



OUTSIDE

- ② Enter current pin number followed by [\*] button.  
Press number [1] button.



OUTSIDE

- ③ Enter new pin number to be registered 4~12 digits.  
Press [\*] button on the number pad.  
A melody will be heard and the registration is complete.

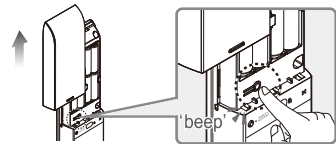


**Caution** Please register pin number within 10 seconds after pressing the registration button or the registration process will be cancelled.  
New registration of a single pin number will delete all previously registered pin number on the system.

### RFID Card Registration (all-at-once)

**Caution** New RFID cards are registered without erasing previous registration records. RFID cards included inside the box are not registered in default. Only compatible cards can be registered and used.

- ① Open battery cover.  
Press [Registration] button once  
~beep sound will be heard.



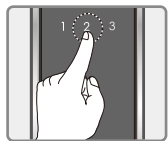
OUTSIDE

- ② Enter current pin number,  
followed by [\*] button.



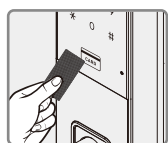
OUTSIDE

- ③ Press number [2] button.



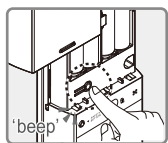
OUTSIDE

- ④ Place the card to be registered on the card reader.  
The beep sound will be heard, and the saved 3 digit location number(001~100) will be displayed on the number pad.



INSIDE

- ⑤ Press [Registration] button after all cards has been registered and the registration is complete.



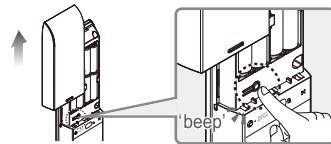
#### Note

Up to 100 RFID cards can be registered. To register multiple RFID cards, repeat step ④ before the number pad turns off.  
Place RFID cards on the card reader within 10 seconds after pressing [Registration] button or the registration process will be cancelled.  
No more RFID card can be registered after the 100th registration.

### RFID Card Registration (one-by-one)

**Caution** The card location number should be from 001~100 and it must consist of 3 digits always.  
When it is not individual card registration, Pressing [\*] button will enable normal registration mode.

- ① Open battery cover.  
Press [Registration] button once  
~beep sound will be heard.



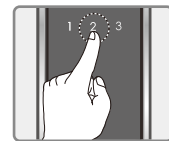
OUTSIDE

- ② Enter current pin number,  
followed by [\*] button.



OUTSIDE

- ③ Press number [2] button.



OUTSIDE

- ④ Enter the card location number consisting of 3 digits from (001~100), followed by the [#] button.



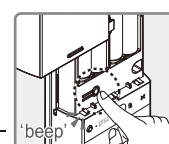
OUTSIDE

- ⑤ When number pad arrow is displayed it is in RFID card entry standby status.  
Place the card to be registered on the card reader.  
The beep sound will be heard, and the saved 3 digit location number will be displayed on the number pad.



INSIDE

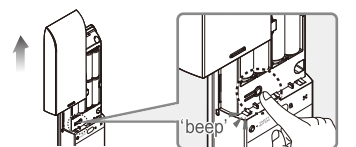
- ⑥ - To register additional RFID cards -  
When all numbers on the pad is lighted, enter new location number, followed by [#] button, then register the new card.



- When there are no additional cards to be registered -  
Press [Registration] button to complete the registration.

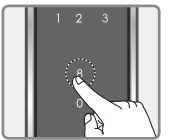
### RFID Card Deletion (all-at-once)

- ① Open battery cover.  
Press [Registration] button once  
~beep sound will be heard.  
Enter current pin number,  
followed by [\*] button.



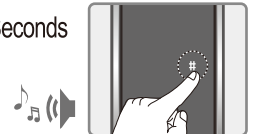
OUTSIDE

- ② Press number [8] button.



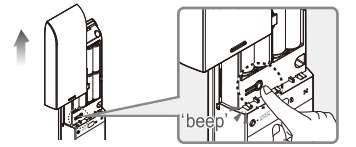
OUTSIDE

- ③ Long press [#] button for 5 seconds  
When the melody is heard,  
All RFID cards are deleted.



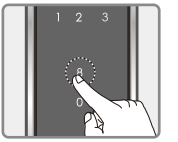
### RFID Card Deletion (one-by-one)

- ① Open battery cover.  
Press [Registration] button once  
~beep sound will be heard.  
Enter current pin number,  
followed by [\*] button.



OUTSIDE

- ② Press number [8] button followed by [#] button.



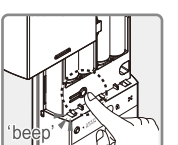
OUTSIDE

- ③ Enter the registered card location number,  
followed by [#] button.



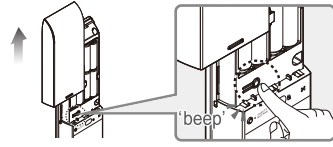
INSIDE

- ④ After deletion is complete,  
all numbers are lighted on the number pad  
Additional card deletion is in standby mode.  
If there is no location number to be deleted,  
press [Registration] button.



## Guest Pin Number Registration

- 1 Open battery cover.  
Press [Registration] button once  
~beep sound will be heard.



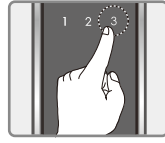
OUTSIDE

- 2 Enter current pin number,  
followed by [\*] button.



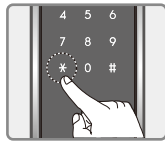
OUTSIDE

- 3 Press number [3] button.



OUTSIDE

- 4 Enter new guest pin number to be registered (4~12 digits)  
and press [\*] button to complete the registration.

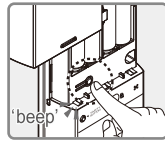


- ◆ The guest pin number is 1 time entry only.
- ◆ New registration will delete old guest pin number.
- ◆ When registration mode is cancelled old pin number will be restored.

## Dual-mode Security Feature Setting

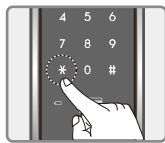
※ The pin number & RFID card should be registered first before setting this feature.

- 1 Press [Registration] button for 5 seconds  
the entire LED will light up after 3 seconds  
the alarm will stop and after 2 seconds  
it will be on again.



OUTSIDE

- 2 Enter current pin number.  
When you press [\*] button,  
the front panel LED will blink and light-up.



7

OUTSIDE

- 3 Press [1] button to Turn-Off Dual-Mode Security.  
Press [3] button to Turn-On Dual-Mode Security.

During Dual-mode Security Setting,  
when the confirmation sound is heard,  
everything will be turned-off.



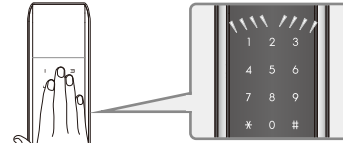
## Random Number Feature

**Note** ※ Random number feature is enabled in default.  
This is a security feature that keeps the pin number from being  
exposed by the additional random number that is added before  
or after the original pin number. The number to be entered  
including the pin number should not exceed 20 digits.

## Opening Door Outside

### Method 1 : Opening by pin number

- 1 Touch the number pad.



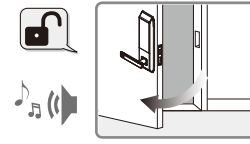
OUTSIDE

- 2 Enter [Pin number]  
and press [\*] button.



OUTSIDE

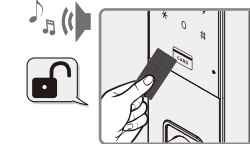
- 3 After the melody is heard,  
the door will open.



### Method 2 : Opening by RFID card

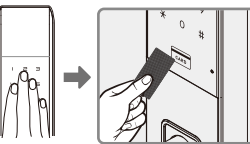
- 1 During Automatic Detection Mode

Press registered RFID card on reader.  
Melody will be heard and the door will open.



- 2 During Manual Detection Mode

Touch the number pad,  
check if the number pad lights up,  
place registered RFID card on the reader.  
Melody will be heard and the door will open.



8

### Method 3 : Opening by random number

Touch the number pad, enter any random number, Enter pin number,  
press [\*] button or enter pin number first, then enter any random number,  
then press [\*] button and the door will open.

- 1 Enter any random number + Enter pin number + [\*] button.
- 2 Enter pin number + Enter any random number + [\*] button.

Either way, when the melody is heard. The door will open.

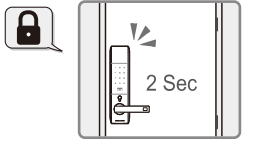
### Method 4 : Opening by Dual-mode Security

Enter Pin Number + Press [\*] button + Place the card to be registered on the card reader

## Closing Door Outside

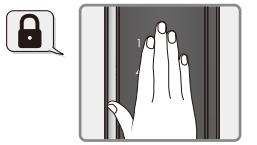
### Method 1 : Automatic lock mode

- ▶ The door will lock automatically  
after 2 seconds of closing the door.



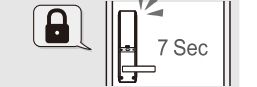
### Method 2 : Manual lock mode

- ▶ Touch the number pad  
and the door will lock.



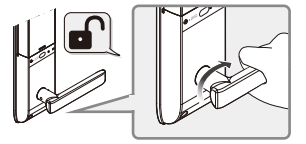
## Opening Door Inside

- Note** Turn the handle downward within  
7 seconds of opening the door or  
the door will lock again.



### By turning the handle downward

- ▶ While the door is closed  
turn the handle in downward motion  
and the door will open.



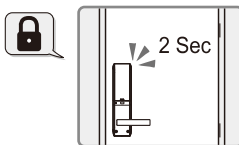
**Caution** Do not install on inside-pulling doors.

9

## Closing Door from Inside

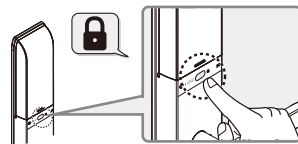
### Method 1 : Automatic lock mode

- ▶ The door will lock automatically  
after 2 seconds of closing the door.



### Method 2 : Manual lock mode

- ▶ After closing the door  
press the [Open / Close] button  
and the door will lock.



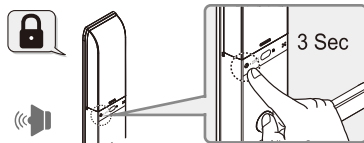
**Note** In manual mode, when the [Manual Lock] button is pressed,  
the ~beep sound will be heard to signal that the door is locked.

## Forced-Lock Feature

■ Inside double lock - When enabled will not allow Pin, Card, entry from outside.

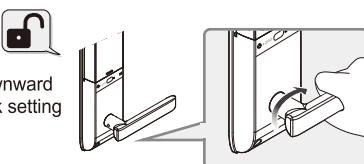
### Setting

- 1 After closing the door.
- 2 Press the [Safety button] located  
on the inner body for 3 seconds  
melody will be heard, and setting is complete.



### Cancellation

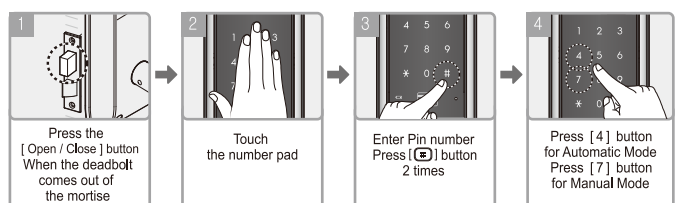
- 1 Turn the inner body handle in downward  
motion inside, and the double lock setting  
will be cancelled.



## Automatic / Manual Lock Setting

An optional feature that lets you set the lock in automatic and manual Lock mode.

**Setting** While the door is partially opened.

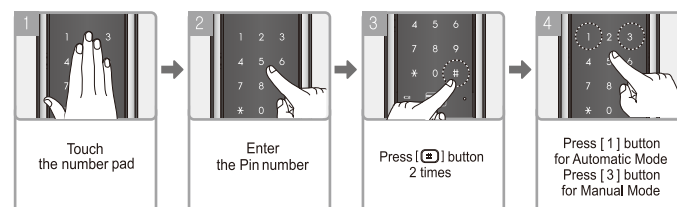


10

**Note** Automatic Lock Mode is set in default. In Manual Lock Mode,  
the door will not lock after closing the door,  
instead touch the number pad outside or  
press the [Open / Close] button inside to lock the door.

## RFID Card Automatic / Manual Detection Setting

An optional feature that lets you set the RFID Card detection to automatic  
and manual mode.



- Note**
- 1 In Automatic Mode,  
- Place the RFID Card on the card reader and the door will open.
  - 2 In Manual Mode,  
- Touch the number pad,  
Place the RFID Card on the card reader and the door will open.
- ※ Automatic Mode is enabled in default.

## Sound Mute Function

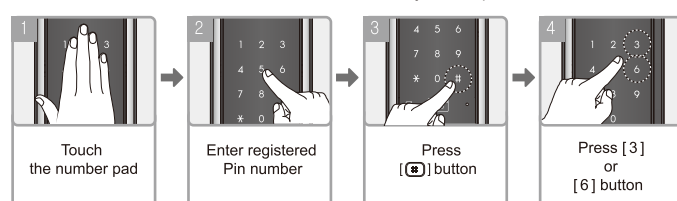
Regardless of the volume setting, This feature lets you mute the operation melody.  
This is per 1 time usage only. The operation sound will occur on next operation.

- 1 Touch the number pad,  
press the [\*] button. (In mute state)
- 2 Enter Pin number, press [\*] button, door will open.  
(Number pad will blink)



## Sound Volume Setting

This feature allows the user to adjust the operation sound volume per level.  
(perform while door closed) ※ Sound can be adjusted up to 7 levels.



**Note** Press [3] button to increase sound.  
Press [6] button to decrease sound.  
In mute mode the number pad will blink, when you press a number.  
The volume level is set on high in default.

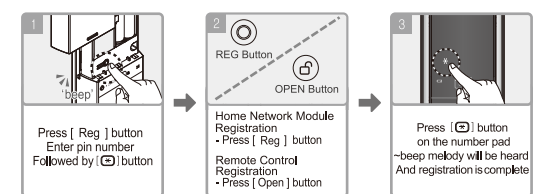
11

## Home Network Module & Remote Control Setting

This feature lets you open the door remotely via home network devices  
and remote control. (Optional)

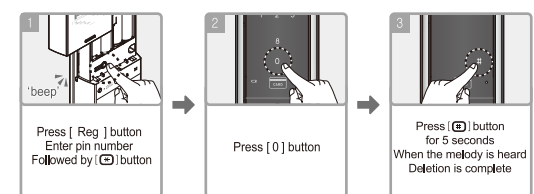
※ Home Network Module and Remote Control setting procedure is the same.

### Registration



**Note** For registration of additional remote control repeat step number 2  
Up to 5 remote controls can be registered.

### Deletion



**Note** New registration of single remote control will delete previously  
registered ones. This method can be used as alternative in deleting  
remote control.

12