



EPIC
FUTUREPROOF

N-TOUCH User Manual

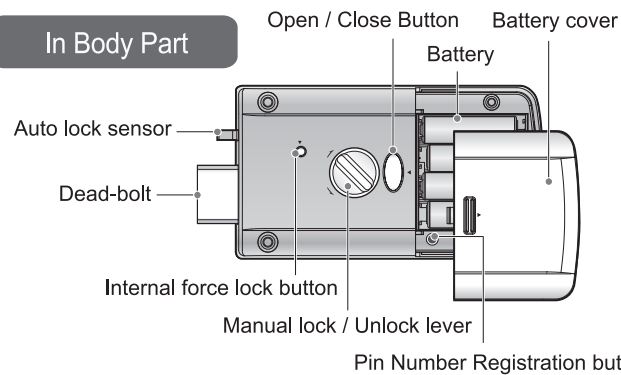
Globalepic@gmail.com www.globalepic.net

This product should be installed by skilled installer only To receive full coverage of the product warranty. Please do not install by yourself, For safety purposes.

Front Body Part



In Body Part



Product Specification

Items	Descriptions	
Installation conditions	Door thickness	35-50mm
Authentication Method	No. of password	4-12 digits
Power supply	DC 6V	LR 6 AA ALKALINE (X4) EA
Emergency Battery	DC 9V	ALKALINE BATTERY (SOLD SEPARATELY)
Temperature	Sensor temperature	72°C ± 5°C Maximum Temperature 62°C ± 5°C Normal Temperature
	Material	Front body AL, ZN, PC in body AL, ZN, ABS

Product Certification

Model name	N-TOUCH
Certification number	KCC-CRM
Manufacturer/Country of origin	SOUTH KOREA

⚠ Safety precautions

- ▶ use it after reading the user's guide and change your password regularly.
- ▶ use only new batteries and Alkaline type when replacing batteries.
- ▶ do not disassemble, install, or repair this product on your own.
- ▶ to clean, use only dry microfiber towel.
- ▶ do not insert pin or any sharp material that can damage the button.
- ▶ do not allow water to enter the product, do not apply excessive shock to the product.

After Service

1. When the consumer damage the item, there will be additional payments regarding the regulations as shown below in accordance with the product warranty.
2. Product should be installed only by a professional installer.
3. In case of emergency should call the customer service center.

EPIC SYSTEMS CO., LTD. / SOUTH KOREA

PTSP1482ONTA REV.01

Convenient Features

1 Mute Mode Setting

Sets the audio and melody guide to mute mode.

SETTING

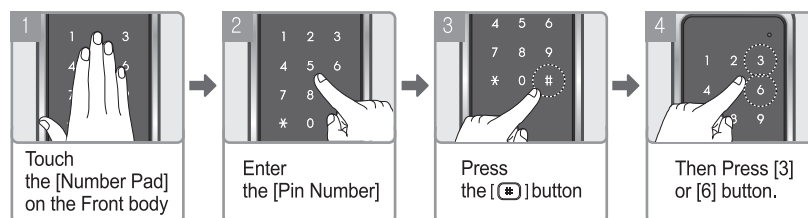
- 1 After pressing [Ⓜ] button and entering Pin Number The melody will not be heard.
- ※ This setting is 1 time only. The next operation will activate the sound again.



2 Volume Setting

This feature will adjust the sound volume by level per user preferences (Performed while door is closed)

SETTING ※ volume can be set up to 7 levels



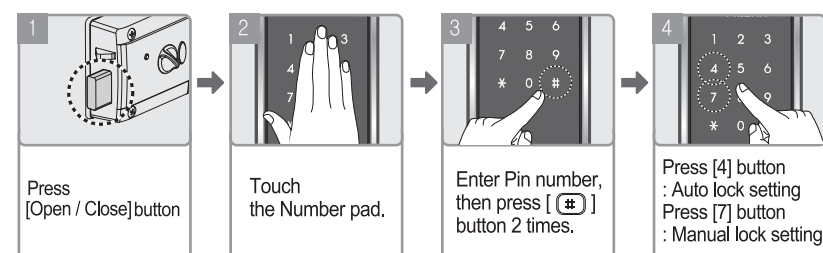
- Note** Front Body [3] Press to increase sound.
[6] Press to decrease sound.
When the sound is in mute mode. Everytime a number is pressed on the number pad. The number pad will blink.

4

3 Automatic / Manual Lock Setting

Sets the door locking mode to Manual or Automatic Lock Mode

Setting Manual / Automatic Mode



Note

Automatic mode is set in default. When you set the manual lock, The door will not automatically lock after closing the door. You need to press [Open/Close] button inside or Touch the number pad outside to close the door

Fire Alarm & Anti-Hacking Alarm



When the inside temperature rises to (62°C±5°C), the lock will generate an alarm and automatically unlocks the door.



When the door detects abnormal operation or forceful opening from the outside, the lock will generate a loud 80(db) alarm.

5

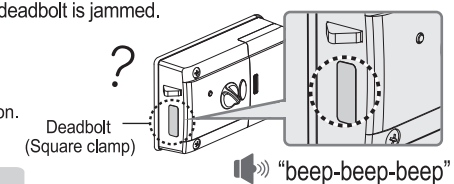
Anti-Prank & 1 Minute Lock

5 times repeated failed [Pin Number] entry will activate a series of alarm and the lock will not function for 1 minute.

Deadbolt Error Alarm

When the door is not closed properly or the deadbolt is jammed. A series of alarm will be activated 3 times.

- ※ In case the alarm doesn't stop contact customer service and ask for assistance. Service cost may occur based on service location.



Replace Battery Alarm

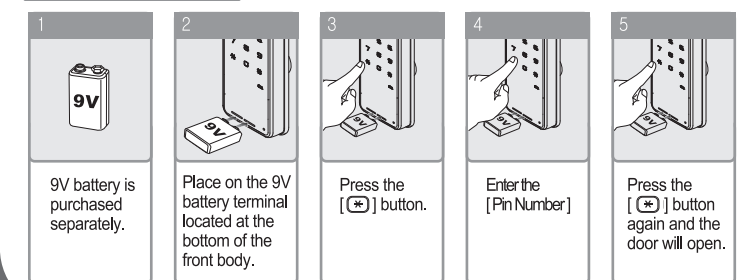
Replace Battery

During normal operation and a series of alarm is heard, it indicates the need for battery replacement. Please replace all battery with new ones at this time.

"Beep-beep-beep"



Emergency Battery When the battery is completely discharged



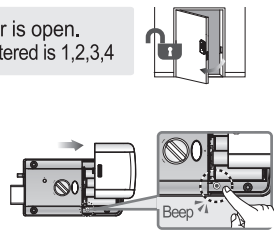
6

1 Pin Number Registration

Caution Please perform registration while door is open.
Upon purchase, Default pin number registered is 1,2,3,4

※ To change existing pin number

- 1 Open the [Battery Cover]
Press [Registration] button once
the 'beep' sound will be heard.



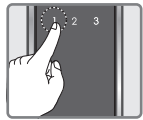
OUTSIDE

- 2 Enter current pin number
followed by [*] button.



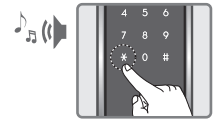
OUTSIDE

- 3 Check if the numbers 1,2,3 has been lighted on the number pad.
Press number 1 button



OUTSIDE

- 4 Enter new pin number to be registered. Press [*] button.
And the new pin number has been registered.
When the melody is heard, the registration is complete.

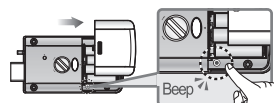


Note Only 1set of Pin Number can be registered

Caution After pressing Registration button, Pin Number should be entered within 10 seconds or the registration will be cancelled.
New registration (steps ①, ②, ③, ④) will delete all previously registered pin on the lock.

2 Guest Pin Number Registration

- 1 Open the [Battery Cover]
Press [Registration] button once
the 'beep' sound will be heard.



OUTSIDE

- 2 Enter current pin number
followed by [*] button



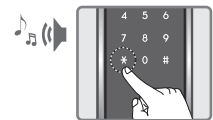
OUTSIDE

- 3 Check if the numbers 1,2,3 has been lighted on the number pad.
Press number 3 button



OUTSIDE

- 4 Enter New Guest Pin Number to be registered (4~12 digits)
And press [*] button to complete the registration.



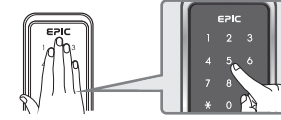
- ◆ WHEN REGISTRATION MODE IS CANCELLED OLD PIN WILL BE RESTORED
- ◆ REGISTERING MORE THAN 12 DIGITS WILL RESULT TO ERROR NO. [2] BUTTON WILL BE FLASHING
- ◆ REGISTERING LESS THAN 4 DIGITS WILL RESULT TO ERROR NO. [2] BUTTON WILL BE FLASHING
- ◆ NEW REGISTRATION WILL DELETE OLD GUEST PIN NUMBER
- ◆ IF NEW PIN NUMBER IS NOT REGISTERED AFTER PRESSING REGISTRATION BUTTON THE REGISTRATION MODE WILL BE CANCELLED
- ◆ THE GUEST PIN NUMBER IS FOR 1 TIME ENTRY ONLY

1

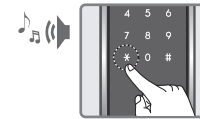
3 Opening from Outside

METHOD 1 Pin Number

- 1 Touch the [Number Pad],
Enter the [Pin Number]



- 2 Press [*] button, a melody will be heard
and the door will open.



Random Number Feature

Touch the number pad, enter any random number, Enter pin number press [*] button
Or Enter pin number first, then enter any random number, Then press [*] button
And the door will open

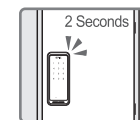
Note This is a security feature that keeps the pin number from being exposed by the additional Random number that is added before or after the original pin number
The number to be entered including the pin number should not exceed 20 digits.

Caution When multi-touch security feature is enabled
After entering pin number, 3 random number will be lighted on the screen
Press this 3 number followed by [*] button. And the door will open.
During multi-touch security setting, the random number feature is disabled
The multi-touch security feature is disabled in default.

4 Closing Door Outside

METHOD 1 Automatic Mode

- ▶ The door will automatically lock
Within 2 seconds of closing the door



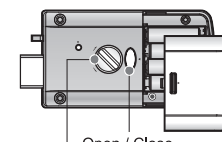
METHOD 2 Manual Mode

- ▶ Touch the [Number Pad], to close the door.



5 Opening / Closing Door Inside

1. On the In body inside press the [Open / Close] button
and the door will open
2. During prank or anti-hacking alarm,
pressing the [Open / Close] button will cancel the alarm.



Open / Close Button
Manual lock / Unlock lever

Caution

- In case of emergency and the [Open / Close] button doesn't work properly
Turn the [Manual Lock / Unlock Lever] to open the door

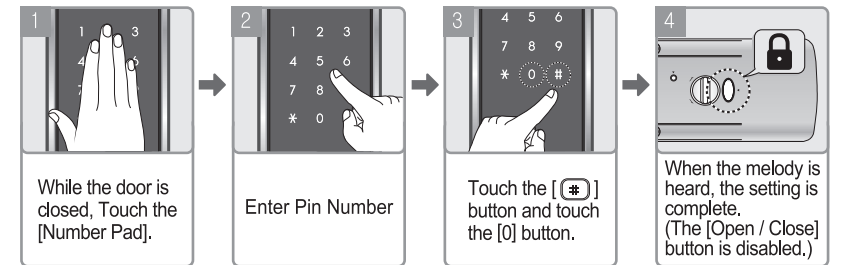
Locking the door

Automatic Mode	The door will lock after 2 seconds of closing the door
Manual Mode	Touch the number pad outside
	Press [Open/Close] button inside

2

6 Force Lock Setting

■ Outside Force Lock - When this is set the door cannot be opened from the inside.
[Open/Close] button is disabled.



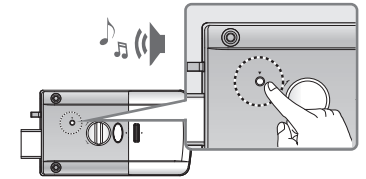
CANCEL

Open the door by pin number and the [Force Lock] setting will be cancelled

■ Internal Force Lock - When this is set the door cannot be opened from outside
Pin number entry is disabled

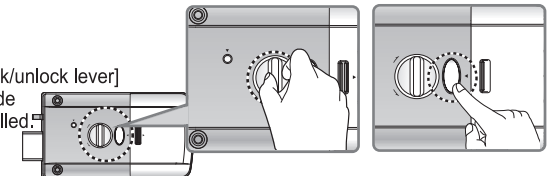
SETTING

- 1 While the door is closed
- 2 Press the [Force Lock] button for 3 seconds.
When the melody is heard, the setting is complete.



CANCEL

Open the door by the [Manual Lock/unlock lever]
or by the [Open/Close] button inside
and the [Force Lock] will be cancelled.



Security Features

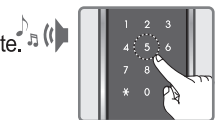
Multi-touch Feature

Note This is a security feature that prevents the password from being exposed,
by removing traces of fingerprint patterns on the number pad.
The multi-touch feature is disabled in default.

- 1 Touch [Number Pad]
Enter Pin number. Press [*] button.



- 2 Press number [5] button on the number pad.
A melody will be heard and Multi-touch feature setting is complete.



To cancel the setting, just repeat steps ①, ②.

Caution When multi-touch feature is enabled, after entering pin number
Press the 3 digit number that is displayed on the screen
Press [*] button and the door will open
When this feature is enabled, the Random number feature is cancelled

3