



User Manual

EPIC TOUCH
EPIC HOOK

24H
A/S info@epic.co.kr

http:// www.epic.co.kr



This product should be installed by skilled installer only
To receive full coverage of the product warranty.
Please do not install by yourself, For safety purposes.

Outbody Part



Emergency battery terminal

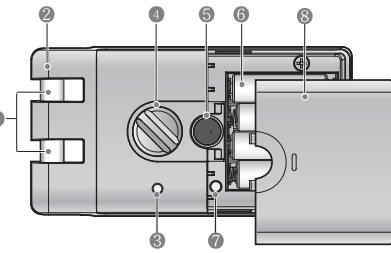
Number Pad

Battery Lamp

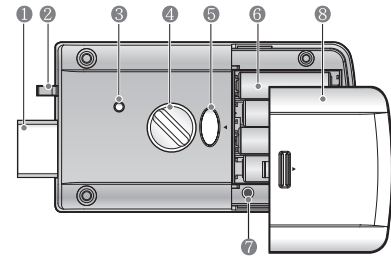
RF Smart Card sensor

Reset button

Inbody Part



HOOK TYPE



DEAD BOLT TYPE

Description (inbody)

| | | | |
|-----------------------|--------------------|-----------------------|-----------------------|
| 1 Deadbolt | 3 Dual Lock Button | 5 Open / Close Button | 7 Registration Button |
| 2 Door Closing Sensor | 4 Manual Lock Knob | 6 Alkaline AA Battery | 8 Battery Cover |

Product Specification

| Items | Descriptions | |
|-------------------------|--------------------|---|
| Installation conditions | Door thickness | 35-50mm |
| Authentication Method | No. of password | 4-12 digits |
| Power supply | DC 6V | LR 6 AA ALKALINE (X4) EA |
| Emergency Battery | DC 9V | ALKALINE BATTERY (SOLD SEPARATELY) |
| Temperature | Sensor temperature | 72°C ± 5°C Maximum Temperature 62°C ± 5°C Normal Temperature |
| | Outbody | AL, ZN, PC |
| Material | Inbody | AL, ZN, ABS |

RF Specification

| Items | Frequency | Channel | Module | Public line power |
|-------|-----------|---------|--------|----------------------|
| RFID | 13.56 MHz | 1EA | ASK | 93.5DBUW/m@10m Below |

⚠ Safety precautions

- ▶ use it after reading the user's guide and change your password regularly.
- ▶ use only new batteries and Alkaline type when replacing batteries.
- ▶ do not disassemble, install, or repair this product on your own.
- ▶ to clean, use only dry microfiber towel.
- ▶ do not insert pin or any sharp material that can damage the button.
- ▶ do not allow water to enter the product, do not apply excessive shock to the product.

After Service

- When the consumer damage the item, there will be additional payments regarding the regulations as shown below in accordance with the product warranty.
- Product should be installed only by a professional installer.
- In case of emergency should call the customer service center.

EPIC SYSTEMS CO., LTD. / SOUTH KOREA

PTSP1494ONTA REV.04

Multi-touch Feature

Note This is a security feature that prevents the password from being exposed, by removing traces of fingerprint patterns on the number pad. The multi-touch feature is disabled in default.

- Touch the [Number Pad] on the Outbody, Enter the Pin number. Press the [#] button.

- Press the [5] button on the number pad. A melody will be heard and Multi-touch feature setting is complete.

To cancel the setting, just repeat steps ①, ②.



Caution When multi-touch feature is enabled, after entering pin number Press the 3 digit number that is displayed on the screen Press [#] button and the door will open When this feature is enabled, the Random number feature is cancelled

※ Random number feature is enabled in default. This is a security feature that keeps the pin number from being exposed by the additional Random number that is added before or after the original pin number The number to be entered including the pin number should not exceed 20 digits.

Opening door by using Random number

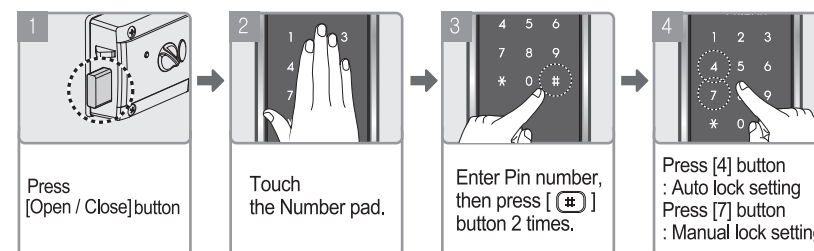
Touch the number pad, enter any random number, Enter pin number, press [#] button Or Enter pin number first, then enter any random number, Then press [#] button And the door will open

4

Automatic / Manual Lock Setting

Sets the door locking mode to Manual or Automatic Lock Mode

Setting Manual / Automatic Mode



Note Automatic mode is set in default. When you set the manual lock, The door will not automatically lock after closing the door. You need to press [Open/Close] button inside or Touch the number pad outside to close the door

Fire Alarm & Anti-Hacking Alarm



When the inside temperature rises to (62°C ± 5°C), the lock will generate an alarm and automatically unlocks the door.



When the door detects abnormal operation or forceful opening from the outside, the lock will generate a loud 80(db) alarm.

5

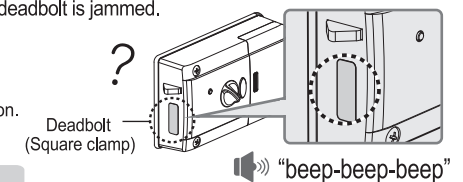
Anti-Prank & 1 Minute Lock

5 times repeated failed [Pin Number] entry will activate a series of alarm and the lock will not function for 1 minute.

Deadbolt Error Alarm

When the door is not closed properly or the deadbolt is jammed. A series of alarm will be activated 3 times.

※ In case the alarm doesn't stop contact customer service and ask for assistance. Service cost may occur based on service location.



Replace Battery Alarm

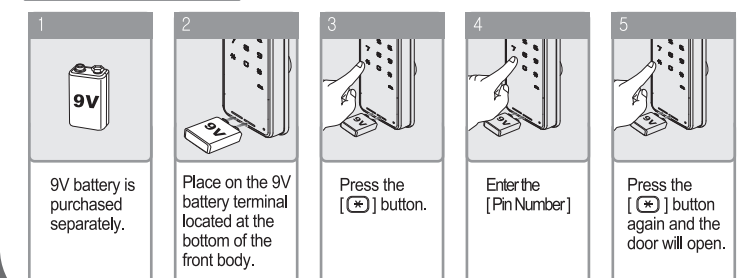
Replace Battery

During normal operation and a series of alarm is heard, it indicates the need for battery replacement. Please replace all battery with new ones at this time.

"Beep-beep-beep"



Emergency Battery When the battery is completely discharged



6

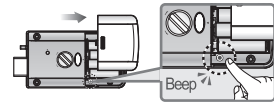
1 Pin Number Registration

Caution Please perform registration while door is open.
Upon purchase, Default pin number registered is 1,2,3,4



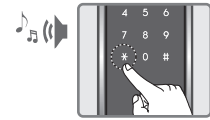
※ To change existing pin number

- 1 Open the [Battery Cover]
Press [Registration] button once the 'beep' sound will be heard.



OUTSIDE

- 2 Enter current pin number followed by [*] button.



OUTSIDE

- 3 Check if the numbers 1, 2, 3, 7, 8, 9, 0, # has been lighted on the number pad.
Press number 1 button.



OUTSIDE

- 4 Enter new pin number to be registered. Press [*] button. And the new pin number has been registered. When the melody is heard, the registration is complete.

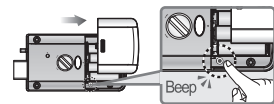


Note Only 1set of Pin Number can be registered

Caution After pressing Registration button, Pin Number should be entered within 10 seconds or the registration will be cancelled.
New registration (steps 1, 2, 3, 4) will delete all previously registered pin on the lock.

2 Smart Key Tag Registration (Normal)

- 1 Open the [Battery Cover]
Press [Registration] button once the 'beep' sound will be heard



OUTSIDE

- 2 Enter current pin number followed by [*] button.



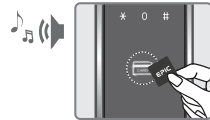
OUTSIDE

- 3 Check if the numbers 1, 2, 3, 7, 8, 9, 0, # has been lighted on the number pad.
Press number 2 button.



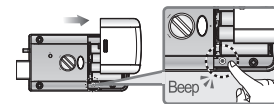
OUTSIDE

- 4 Place smart keys to be registered on the Card sensor (A beep sound will signal registration of each card)



INSIDE

- 5 Press [Registration] button after all cards has been registered. And the registration is complete.

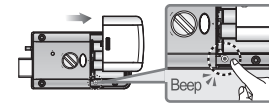


Note Up to 100 Smart keys can be registered. To register multiple smart keys, repeat step 4 before the number pad turns off. Place smart keys on the sensor within 10 seconds after pressing [Registration] button or the registration process will be cancelled.
No more smart keys registration is possible on registering 100th smart key.

1

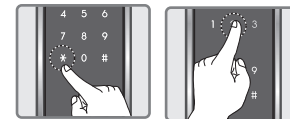
3 Smart Key Tag Registration (Individual)

- 1 Open the [Battery Cover]
Press [Registration] button once the 'beep' sound will be heard.



OUTSIDE

- 2 Enter current pin number, followed by [*] button.
Check if the numbers 1, 2, 3, 7, 8, 9, 0, # has been lighted on the number pad.
Press number 2 button.



OUTSIDE

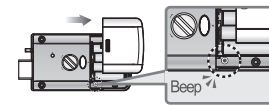
- 3 Enter the card location number consisting of 3 digits from (001~100), followed by The [#] button.



Place the card to be registered on the sensor.
The beep sound will be heard, and the saved 3 digit location number will be displayed on the number pad.

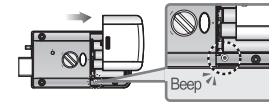
INSIDE

- 4 Press [Registration] button after all cards has been registered. And the registration is complete.



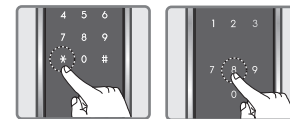
4 Smart key Delection (All-at-once)

- 1 Open the [Battery Cover]
Press [Registration] button once the 'beep' sound will be heard.



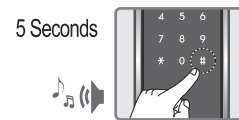
OUTSIDE

- 2 Enter current pin number, followed by [*] button.
Check if the numbers 1, 2, 3, 7, 8, 9, 0, # has been lighted on the number pad.
Press number 8 button.



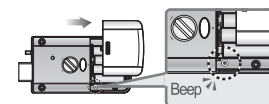
OUTSIDE

- 3 Long Press [#] button for 5 seconds
When the melody is heard,
All smart keys are deleted.



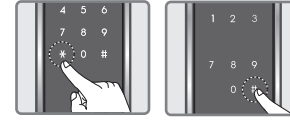
5 Smart key Delection (Individual)

- 1 Open the [Battery Cover]
Press [Registration] button once the 'beep' sound will be heard.



OUTSIDE

- 2 Enter current pin number, followed by [*] button.
Check if the numbers 1, 2, 3, 7, 8, 9, 0, # has been lighted on the number pad.
Press number 8 button, followed by [#] button



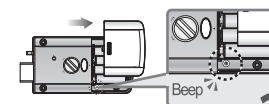
OUTSIDE

- 3 Enter the registered card location number, followed by [#] button



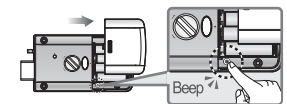
INSIDE

- 4 Press [Registration] button after all cards has been registered. And the registration is complete.



6 Guest Pin number Registration

- 1 Open the [Battery Cover]
Press [Registration] button once the 'beep' sound will be heard.



OUTSIDE

- 2 Enter current pin number, followed by [*] button.
Check if the numbers 1, 2, 3, 7, 8, 9, 0, # has been lighted on the number pad.
Press number 3 button.



OUTSIDE

- 3 Enter New Guest Pin Number to be registered (4~12 digits)
And press [*] button to complete the registration.

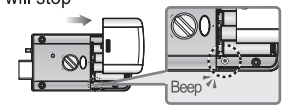


- ◆ The guest pin number is 1 time entry only.
- ◆ New registration will delete old guest pin number.
- ◆ When registration mode is cancelled old pin number will be restored.

7 Dual-mode Security Feature Setting

The Pin number & Smart key should be registered first before setting this feature

- 1 Press [Register] button for 5 seconds
The entire LED will light up after 3 seconds the alarm will stop
And after 2 seconds it will be on again.
- 2 Enter current user password.
When you press [*] button,
The front panel LED will blink and light-up.



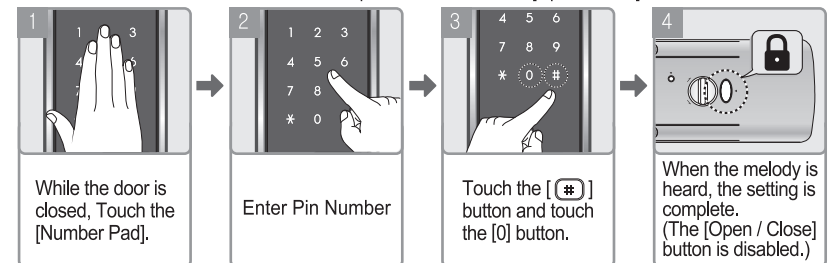
- 3 Press [1] button to Turn-Off Dual-Mode Security
Press [3] button to Turn-On Dual-Mode Security.



During Dual-Mode Security Setting,
when the confirmation sound is heard,
everything will be turned-off

8 Force Lock Setting

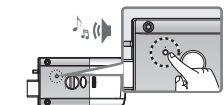
- 1) Outside Force Lock
- When this is set the door cannot be opened from the inside. [Open / Close] button is disable.



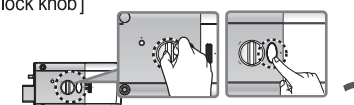
CANCEL Open the door by pin number and the [Force Lock] setting will be cancelled

- 2) Internal Force Lock
- When this is set the door cannot be opened from the outside. Pin number entry is disabled.

- 1 While the door is closed
- 2 Press the [Force Lock] button for 3 seconds.
When the melody is heard, the setting is complete.



CANCEL Open the door by the [Manual Lock/unlock knob] or by the [Open/Close] button inside and the [Force Lock] will be cancelled.



3